

Indications
of the Freka® Pexact, ENFIT



- **Long-term enteral nutrition especially:**
 - Oesophageal passage dysfunctions
 - Stenosis
 - Varices
 - Diverticulum
 - Corrosion burns
 - Radio- or chemotherapy
- To avoid ENT-tumor cell seeding
- After head- and mouth surgery
 - Only transnasal endoscopy
- **Advantages:**
 - Balloon feeding tube can be removed non-endoscopically
 - Gastropexy lowers complications by up to 85% compared to standard PEG. It is safeguarding the stoma and preventing peritoneal gastric juice infiltration, thus reducing infection risks.*

* Leonie Schumacher, Christian Bojarski et. al, Complication rates of direct puncture and pull-through techniques for percutaneous endoscopic gastrostomy - Results from a large multicenter cohort, DOI: 10.1055/a-1924-3525, 08/2022

Ordering information

	Product	Packaging	Art.No.
Freka® Pexact II FR 15, ENFit		1x1	7601365
Gastropexy Device II		1x1	7601363
Freka® GastroTube FR 15		1x1	7755648
Freka® Seldinger Wire		1x1	7989911
Accessories		Packaging	Art.No.
Dressing Set acc. to Hermann		1 x 1	7901081
Erlanger Dressing Set		1 x 1	7981941

Freka®
Pexact II FR 15, ENFit

Direct Puncture Gastrostomy with
Gastropexy for a stable fixation



Freka® Pexact, ENFit

Direct Puncture Gastrostomy with Gastropexy according to

Dr. Toshio Kadota & Dr. Fumiaki Ueno (Direct Puncture Method),
Dr. Masaki Funada (Gastropexy Device = Loop Fixture & Loop Fixture II), Japan and
Dr. Arno Dormann, Germany

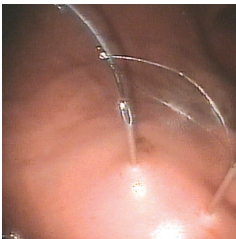


Gastropexy with unique suturing method

- Stable fixation of stomach to abdominal wall*
- Gastropexy device for single-hand operation
- Endoscopically controlled application
- Extra corporal suture technique
- Reduced risk of peritoneal infection by direct access*
- Short, straight stoma tracts



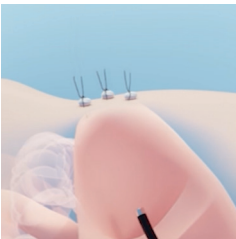
Insertion of Gastropexy Device



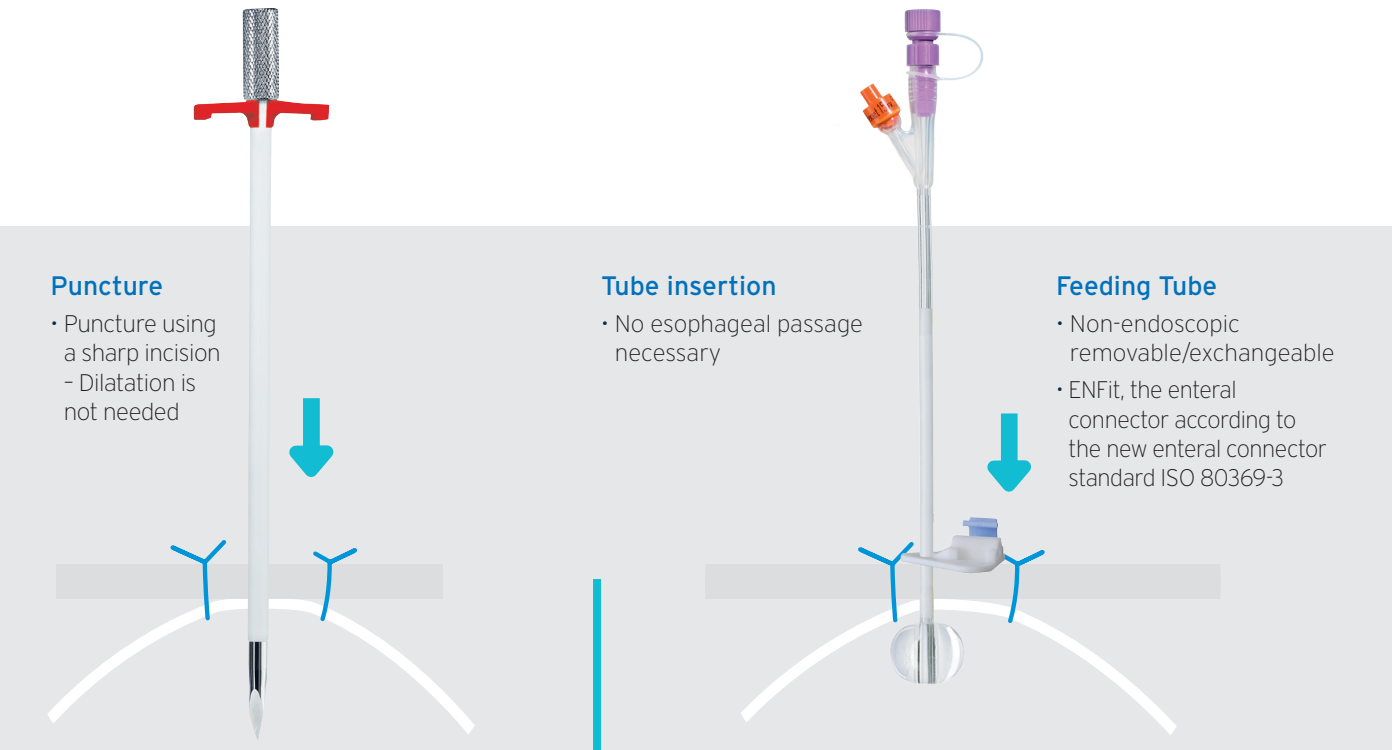
Overtaking thread with loop wire



Fixing thread

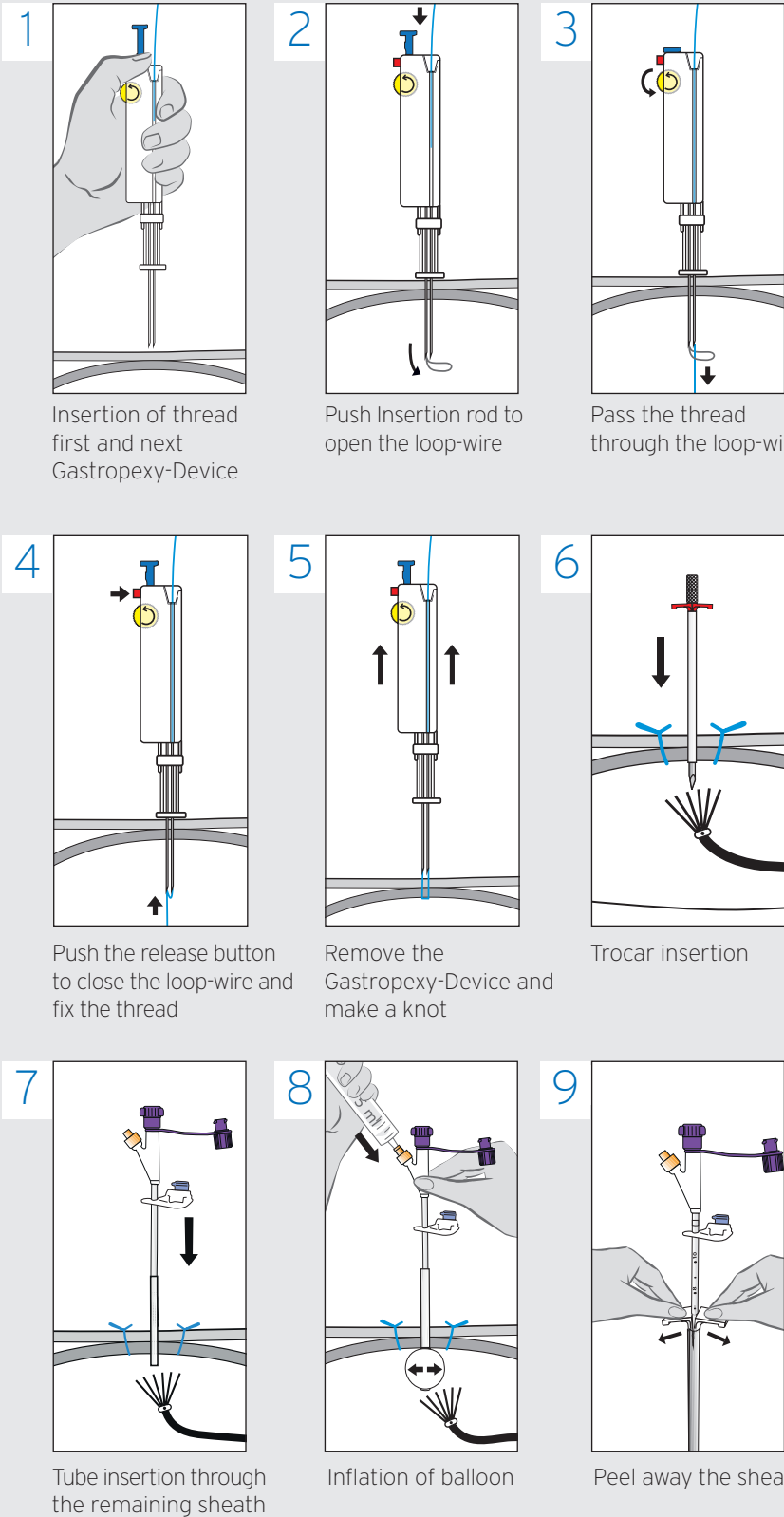


Gastropexy sutures with cotton balls



Placement method Freka® Pexact*

with endoscopic control



*For details of the procedure, refer to the instructions for use.